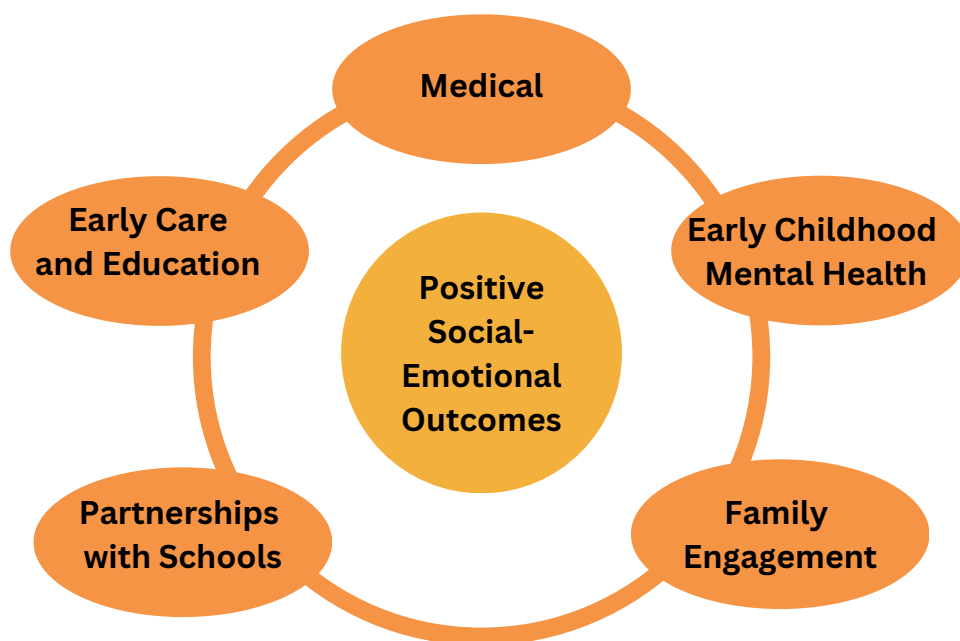

January 2022-June 2023

Platte County Rooted in Relationships Snapshot Report

Rooted in Relationships (RiR) is a statewide initiative that partners with communities to implement evidence-based practices that enhance the social-emotional development of children, birth through age 8. RiR supports communities to implement the Pyramid Model and establish a multi-disciplinary stakeholder team charged with developing and implementing a long-range plan to influence the early childhood systems of care to support the healthy social-emotional development of children. Platte County began implementing the Rooted in Relationships (RiR) initiative in 2021. Their work is coordinated by Community and Family Partnership (CFP) and the fiscal agent is Columbus Area United Way. The CFP collaborative is made up of individuals from different sectors of the community including but not limited to parents, schools, public health, head start/early head start, mental health providers, health and human services, law enforcement, early childhood educators/coaches, health care providers, faith-based sector, and interested citizens.



COMMUNITY EARLY CHILDHOOD SYSTEMS OF CARE

From January 2022 through June 2023, thousands of families were served directly and indirectly in Platte County. Activities most frequently took place in the priority areas of early care and education and family engagement.

Children and Families Served in 2022

Number of Families Served Directly	510	Number of Families Served Indirectly	82	Number of people reached through communication*	55,918
Number of Children Served Directly	584	Number of Children Served Indirectly	60		

*Communication went beyond Platte County



Early Care and Education

The following Early Care and Education activities occurred:

- After Hours with the Chamber Meeting with 50 participants
- A resource night for providers will 11 attendees



Family Engagement

The following Family Engagement events/activities took place:

- Parents Interacting with Infants (PIWI) Classes with 35 participants
- Partnership with Parents Class with 7 participants
- Weekly Radio Ads on Importance of the First 5 Years and to promote the Week of the Young Child
- Bi-Weekly community newsletter was disseminated to 170 participants

PYRAMID MODEL IMPLEMENTATION

About the Implementation

The RIR Pyramid Model implementation offers center-based and home-based child care providers with Pyramid Model training and ongoing coaching support for the implementation of positive strategies to promote young children's social-emotional development and skills. Providers participate in training, coaching, and collaboration meetings for three years. The following reports information from January 2022 through June 2023.

Sites and Providers

3 coaches provided Pyramid Model training and implementation support to 15 providers including lead teachers (n=7), assistant teachers (n=3), and home providers (n=5) in 10 child care sites.

- 5 were center-based.
- 80% of sites were retained in RiR.
- 73% of providers were retained in RiR.

About the Children

Programs completed a demographic survey about 155 children they serve.

- 4% qualified for a state childcare subsidy, an indicator of low income. 3% spoke a primary language other than English.

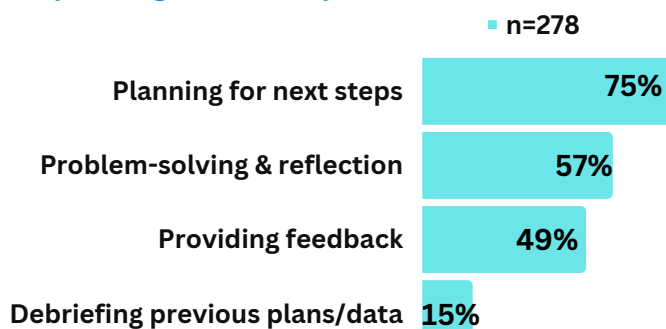
176 children had ASQ-SE results.

- 83% had typical social-emotional behaviors.

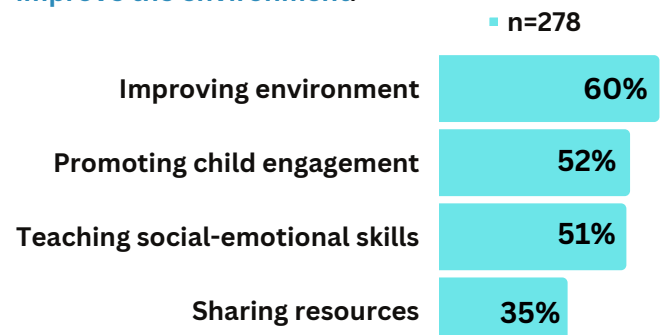
Coaching Activities

The coaches logged 278 coaching sessions with their providers. 273 were in-person. The most common coaching activities included planning for next steps, problem-solving/reflection, and providing feedback.

The most common coaching activity was **planning for next steps**.

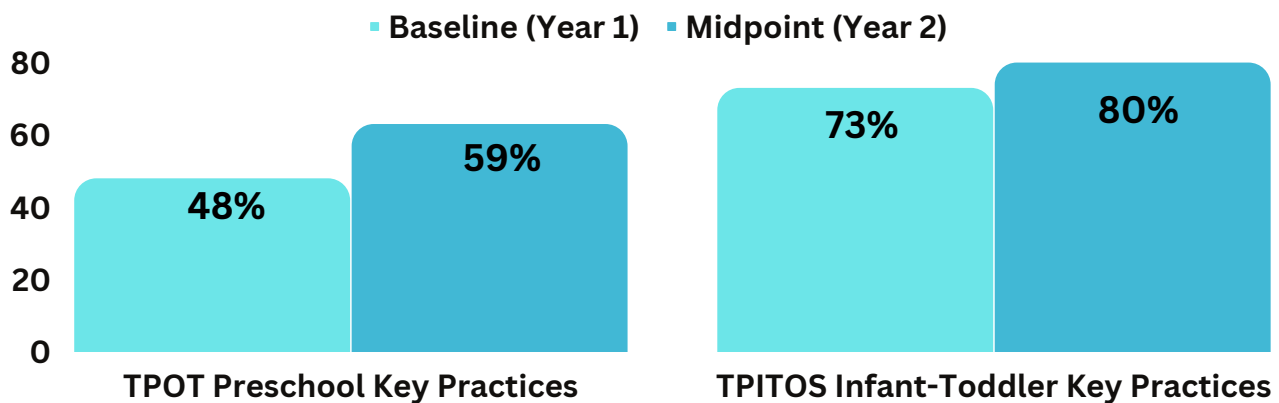


Coaches most frequently helped providers **improve the environment**.



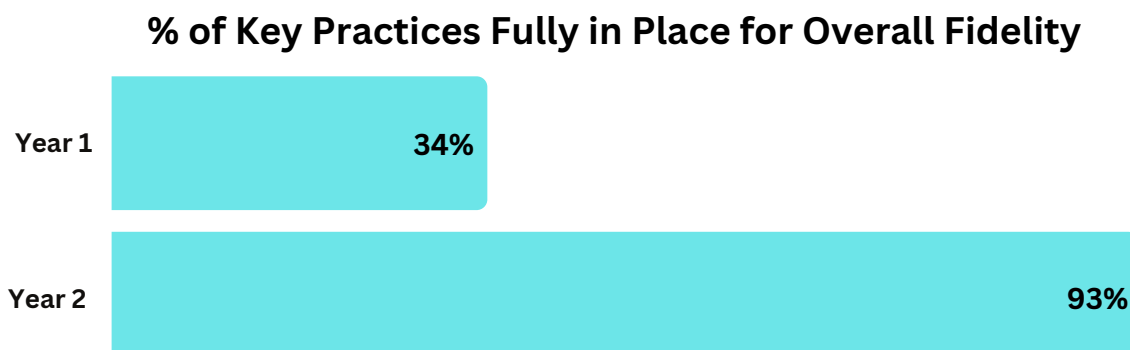
2021-2022 Pyramid Model Practices in Place

In Platte County, a cohort of providers began in the Fall of 2021. Lead providers in center-based programs received Teaching Pyramid Observation Tool (TPOT) or Teaching Pyramid Infant-Toddler Observation Scale (TPITOS) observations in the Fall of 2021 (Year 1) and the Fall of 2022 (Year 2). Lead providers will receive their final observation in the Spring of 2024 (Year 3). By Year 2, preschool providers (TPOT) had 59% of key practices in place while infant-toddler providers (TPITOS) had 80% of key practices in place. By year 2, 93% of TPOT practices received no red flags and 100% of TPITOS practices received no red flags. The goal is to have 80% of key practices in place and 0 red-flagged practices by the end of the 3-year period.



2021-2024 Fidelity for Home-Based Programs Benchmarks of Quality

Home-based providers completed the Benchmarks of Quality (BOQ), a self rating of fidelity for adopting Pyramid Model strategies. Year 1 and Year 2 findings are reported. Year 3 data will be completed in Spring 2024. By Year 2, 93% of key practices were reported to be fully in place. The goal is to have 75% of key practices in place to achieve fidelity.



**Observation and BOQ participation numbers are masked as participant numbers were low. To protect participant privacy n's are not included. To review overall initiative engagement from year to year please see the annual evaluation report. Only individuals with 2 observation time points are included.

Provider Perceptions

Year 2 providers in Platte County were invited to participate in a brief phone interview regarding their experience in the RiR initiative. The following information was obtained from five providers currently engaged in the initiative.

BENEFITS OF ENGAGEMENT IN RIR

Participants reported their coaches were of great value to them due to the resources and expertise they provided. Participants appreciated the resources they were able to share with parents and felt their relationships with parents had been strengthened. Providers report "buying in" to what they have learned and reported making changes to the way they process their own emotions because of the training they have received.

"The coaching has held me accountable. It has made sure I follow through with the training and that I continue to do good things, focus on positive reinforcement, everything that we have been trained on."

CHALLENGES TO ENGAGEMENT IN RIR

Some providers desired more hands-on engagement during the Pyramid Model trainings and the collaboration meetings. Others reported personal challenges to adjusting longtime classroom practices. Finally, some felt the time commitment required to get to trainings to be a challenge.

"When we did the collaboration meetings, I guess we were under the impression that it was our time to finally get to talk to each other because we couldn't talk during training...but it felt like a mini-training".

"I now have a schedule and set of rules that the children follow that I never had before and it makes the day run so much smoother." -Platte County Child Care Provider

"[RiR] has taught me different ways to teach children about sharing, talking to them about emotions, redirecting their energy and problem-solving." -Platte County Child Care Provider

Snapshot Report prepared by
Kailey Snyder, Ph.D.
Kate Dietrich, BA.
The University of Nebraska Medical Center's
Munroe-Meyer Institute:
A University of Excellence for Developmental Disabilities

